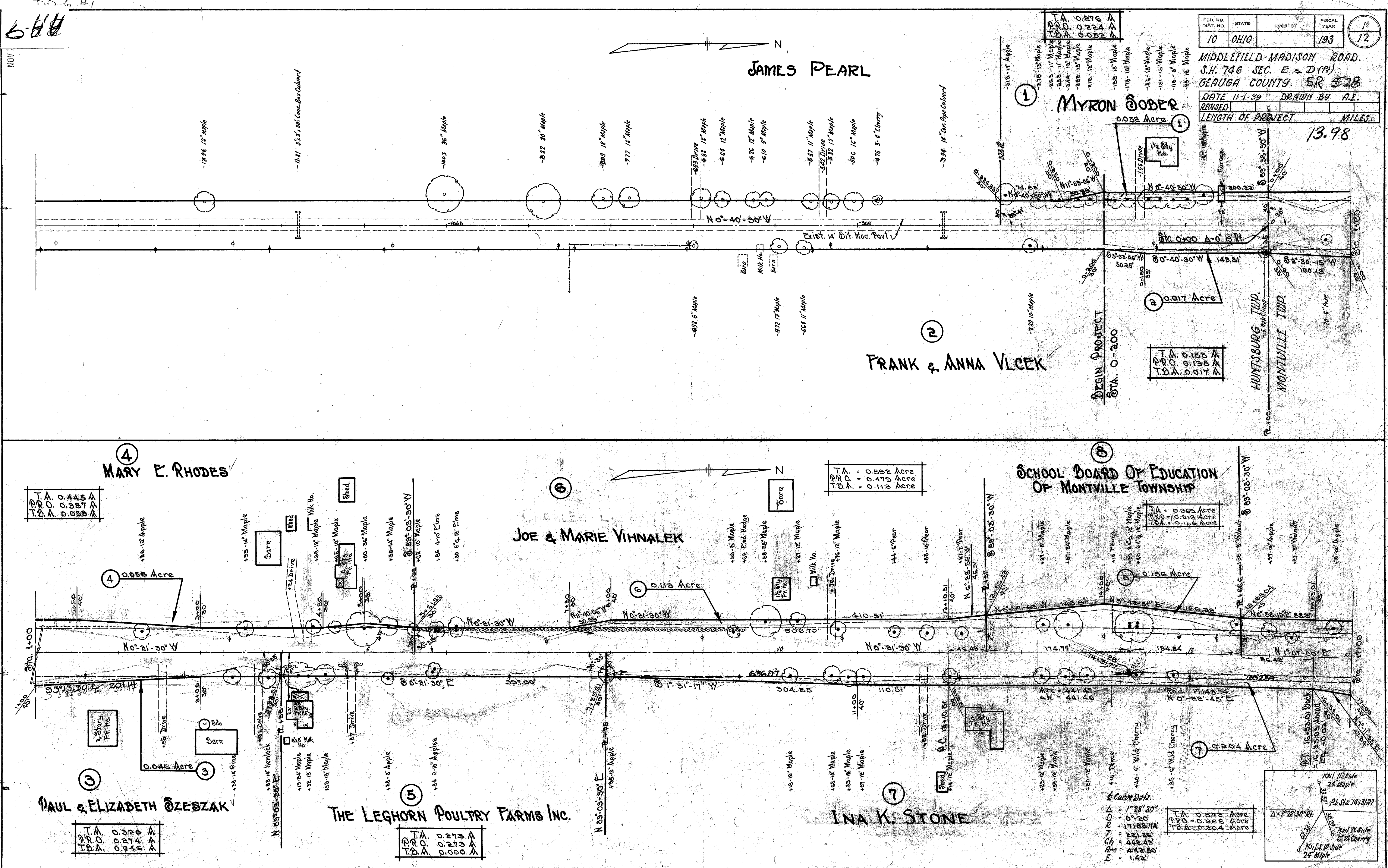


B-7

6-44

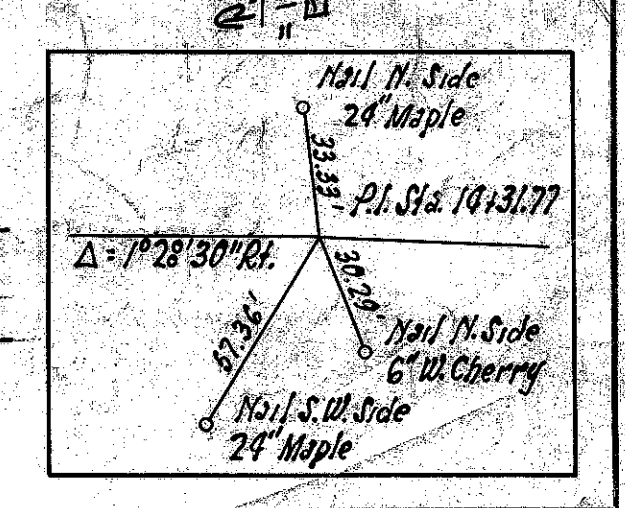
NOV 2



FED. RD. DIST. NO.	STATE	PROJECT	FISCAL YEAR	
10	OHIO		193	12

MIDDLEFIELD-MADISON ROAD.  
S.H. 746 SEC. E & D (N)  
GEAUGA COUNTY. SR 528

DATE 11-1-39 DRAWN BY A.E.  
REVISED  
LENGTH OF PROJECT 13.98 MILES.





MIDDLEFIELD-MADISON ROAD.  
S.H. 746 SEC. E & D (M)  
GEAUGA COUNTY.

DATE \_\_\_\_\_ DRAWN BY: A.E.  
REVISION \_\_\_\_\_  
LENGTH OF PROJECT \_\_\_\_\_ MILES.

JOHN STEARNS

A. J. CROMWELL

GEORGE J. & D.M. ADAMS

EVALYN S. WEED

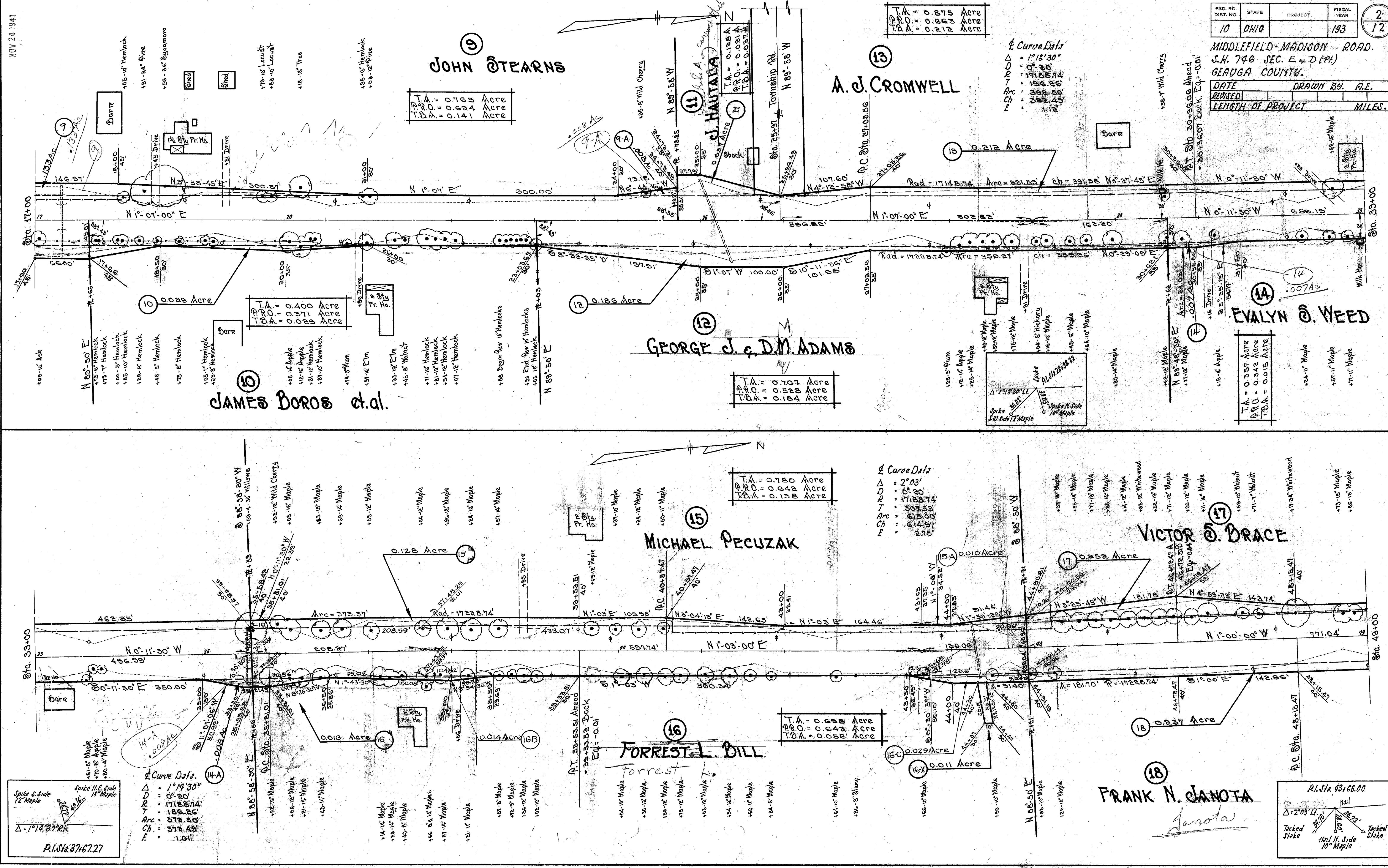
JAMES BOROS et al.

MICHAEL PECUZAK

VICTOR S. BRACE

FORREST L. BILL

FRANK N. JANOTA





NOV 24 1941

FED. RD. DIST. NO.	STATE	PROJECT	FISCAL YEAR
10	OHIO		193

3

12

MIDDLEFIELD - MADISON ROAD.  
 S.H. 746 SEC. E & D (PA)  
 GEauga COUNTY.

DATE	DRAWN BY
REVISED	A.E.
LENGTH OF PROJECT	MILES.

②0  
W.E. KEMMER

T.A. = 1.071 Acre  
P.R.O. = 0.938 Acre  
T.D.A. = 0.133 Acre

19  
J. REHOR

T.A.	= 0.675	Acre
P.R.O.	= 0.564	Acre
T.B.A.	= 0.111	Acre

22  
ANDREW LOCSEY et.al.

23  
R.H. RHODES

24

ଶ୍ରୀ. & D. DENC

25  
W.A. MARQUETTE

T.A. = 0.737 Acre  
P.R.O. = 0.710 Acre  
T.B.A. = 0.027 Acre

21 N  
Y. J. DIVOKY

Diagram showing a station (Sta. = 160.87') and three sight lines to trees:

- Spike S.E. Side 13 Maple (Distance: 49.40')
- Spike S. Side 24 Maple (Distance: 30.06')
- Spike N.E. Side 29 Maple (Distance: 90.03')

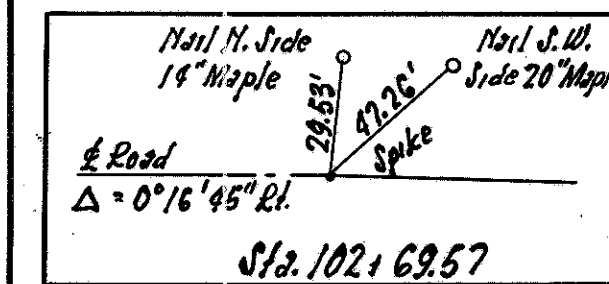
Station: Sta. = 160.87',  $\Delta = 3^\circ 01' \text{ Rt.}$

Pt. S. 52.68, 08

T.A. = 0.822 Acre  
P.R.O. = 0.585 Acre  
T.B.A. = 0.237 Acre

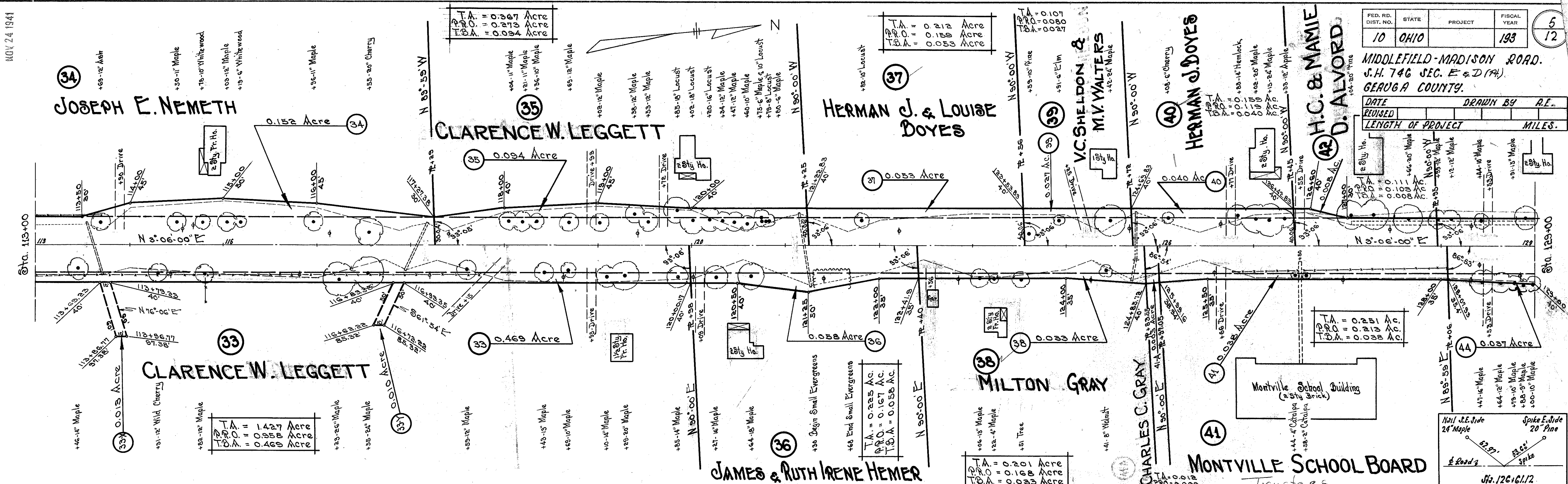
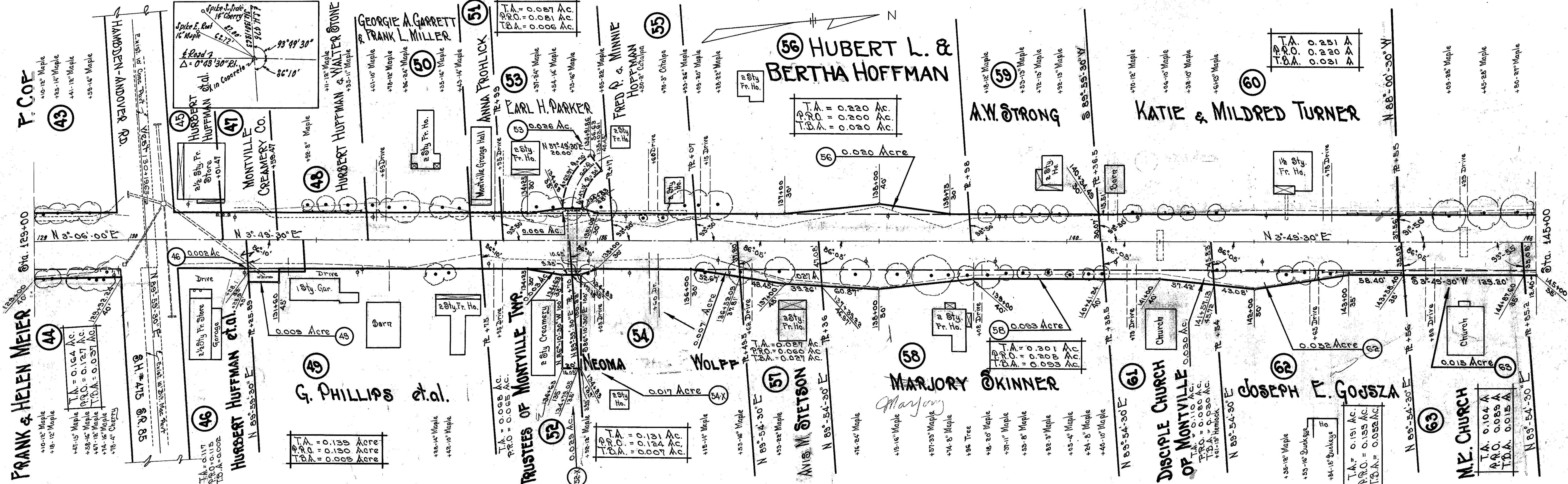
& Curve Data

$$\begin{array}{l} \Delta = 3^{\circ} 01' \\ D = 0^{\circ} - 20' \\ R = 17188.74' \\ T = 452.61' \\ \text{Arc} = 905.00' \\ \text{Ch} = 904.89' \\ E = 5.95' \end{array}$$





NOV 24 1941

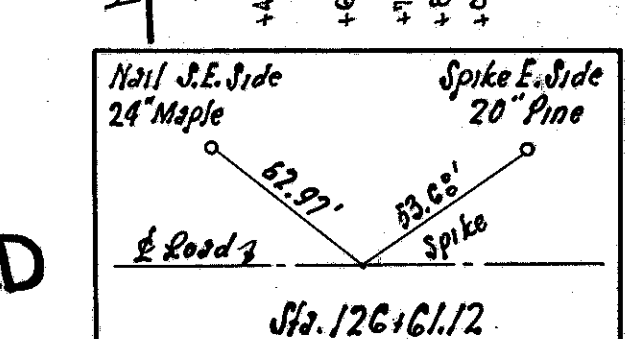


FED. RD. DIST. NO.	STATE	PROJECT	FISCAL YEAR
10	OHIO		193

MIDDLEFIELD-MADISON ROAD.  
S.H. 746 SEC. E & D (14)  
GEauga COUNTY.

DATE	REVISION	DRAWN BY	A.E.

LENGTH OF PROJECT \_\_\_\_\_ MILES.





NOV 24 1941

64  
CEMETERY

T.A. 0.352 A  
P.R.O. 0.302 A  
T.O.A. 0.080 A

66  
LYALL & ROSE HUNTOON

T.A. 0.247 A  
P.R.O. 0.241 A  
T.O.A. 0.006 A

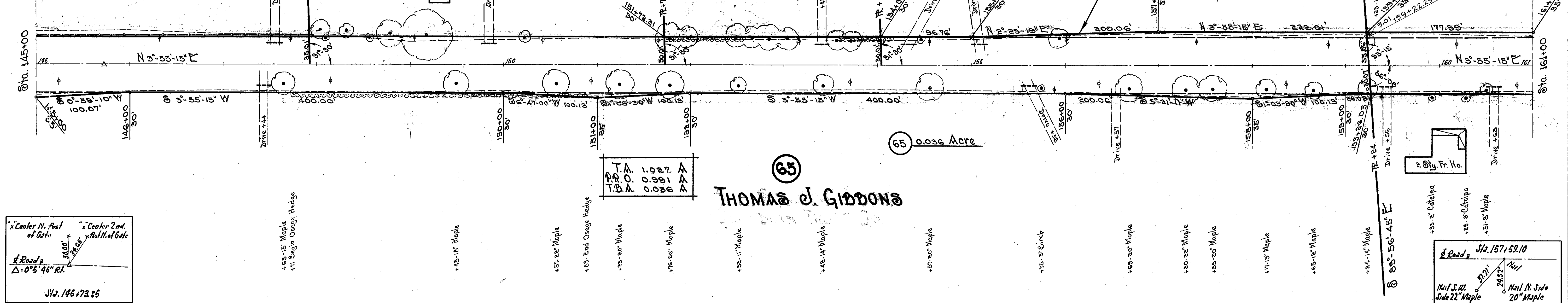
67  
P.L. WOLF

T.A. 0.159 A  
P.R.O. 0.159 A  
T.O.A. 0.000 A

68  
JOHN M. PETERS ESTATE

T.A. 0.355 A  
P.R.O. 0.355 A  
T.O.A. 0.037 A

FED. RD. DIST. NO.	STATE	PROJECT	FISCAL YEAR	6 12
10	OHIO		193	
MIDDLEFIELD-MADISON ROAD. S.H. 746 SEC. E. & D (Pt.) GEORGIA COUNTY.				
DATE	DRAWN BY	A.E.		
REVISED				
LENGTH OF PROJECT		MILES.		



69  
PETER & URSULE STANONIS

T.A. 1.048 A  
P.R.O. 0.808 A  
T.O.A. 0.242 A

M.S. KERR

72  
T.A. 0.255 A  
P.R.O. 0.181 A  
T.O.A. 0.064 A

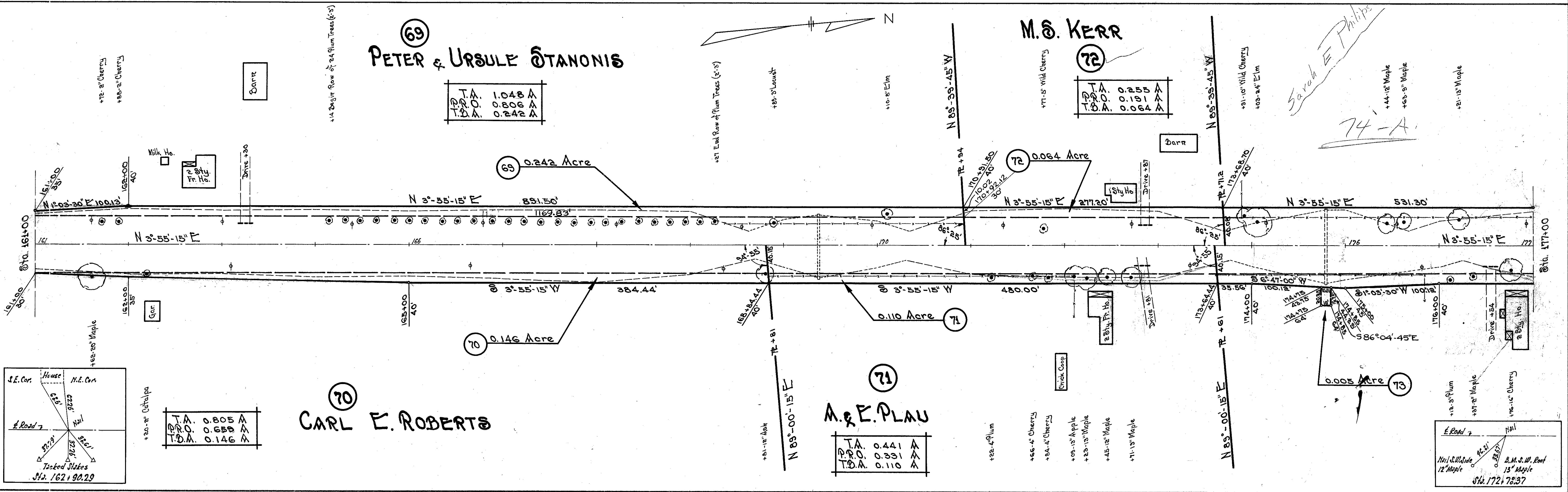
70  
CARL E. ROBERTS

T.A. 0.805 A  
P.R.O. 0.659 A  
T.O.A. 0.146 A

71  
M. & E. PLAU

T.A. 0.441 A  
P.R.O. 0.331 A  
T.O.A. 0.110 A

74-A



NOV 24 1941

74-A

SARAH E. PHILLIPS

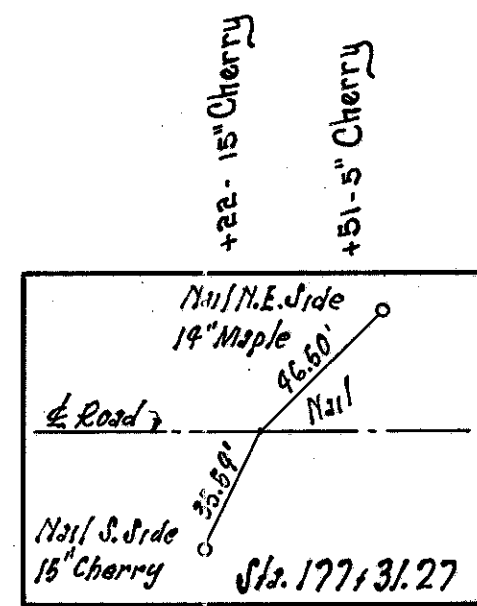
74 LEO A. PHILLIPS

75 E.C. HAMPTON

FED. RD. DIST. NO.	STATE	PROJECT	FISCAL YEAR	7
10	OHIO		193	12

MIDDLEFIELD-MADISON ROAD.  
S.H. 746 SEC. E. & D (P4)  
GEORGA COUNTY.

DATE	DRAWN BY	A.E.
REVISED		
LENGTH OF PROJECT		MILES.

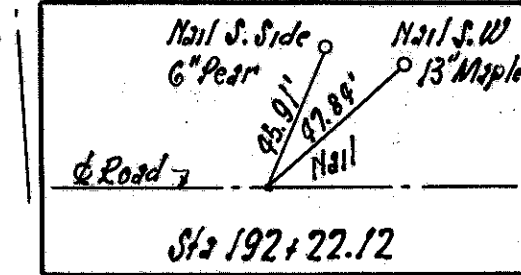


T.A.	1.135 A
P.R.O.	0.836 A
T.D.A.	0.299 A

73 A. & M. CHARNEY

76 FRANK BUSMAN

T.A.	0.521 A
P.R.O.	0.421 A
T.D.A.	0.100 A



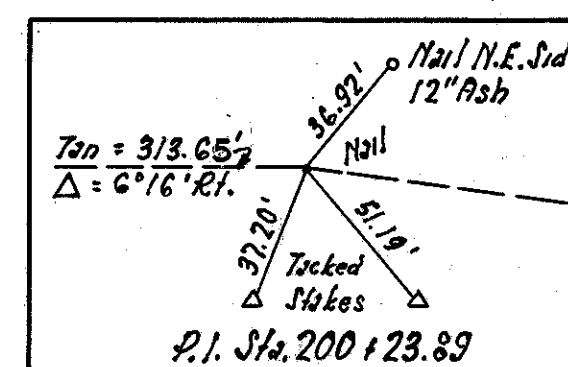
78 MARY PETKASKI

80 ANNA F. HILGER

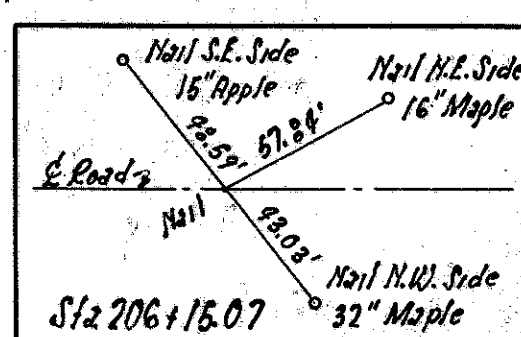
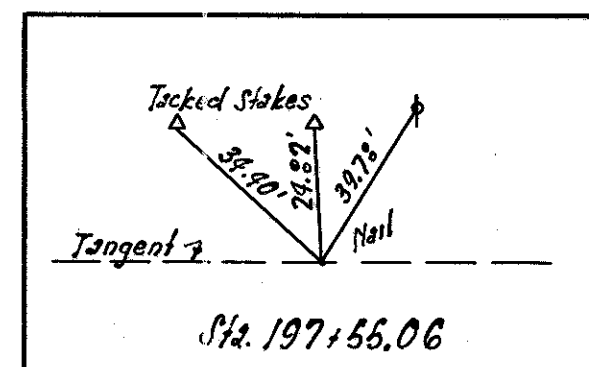
79 MARIE E. BEARDSLEY et al.

77 JOSEPHINA BUSMAN

Curve Data  
 $\Delta = 6^\circ 16'$   
 $D = 1'$   
 $R = 5729.68'$   
 $L = 513.66'$   
 $Ch = 626.35'$   
 $E = 8.58'$




T.A.	0.421 A
P.R.O.	0.386 A
T.D.A.	0.035 A



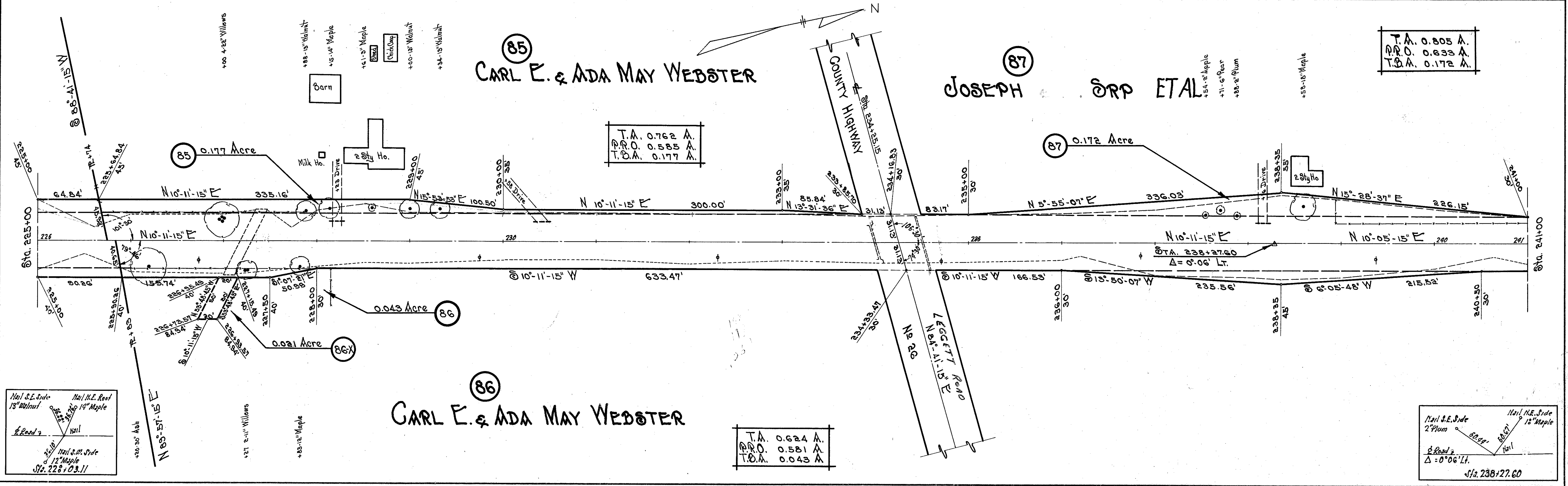
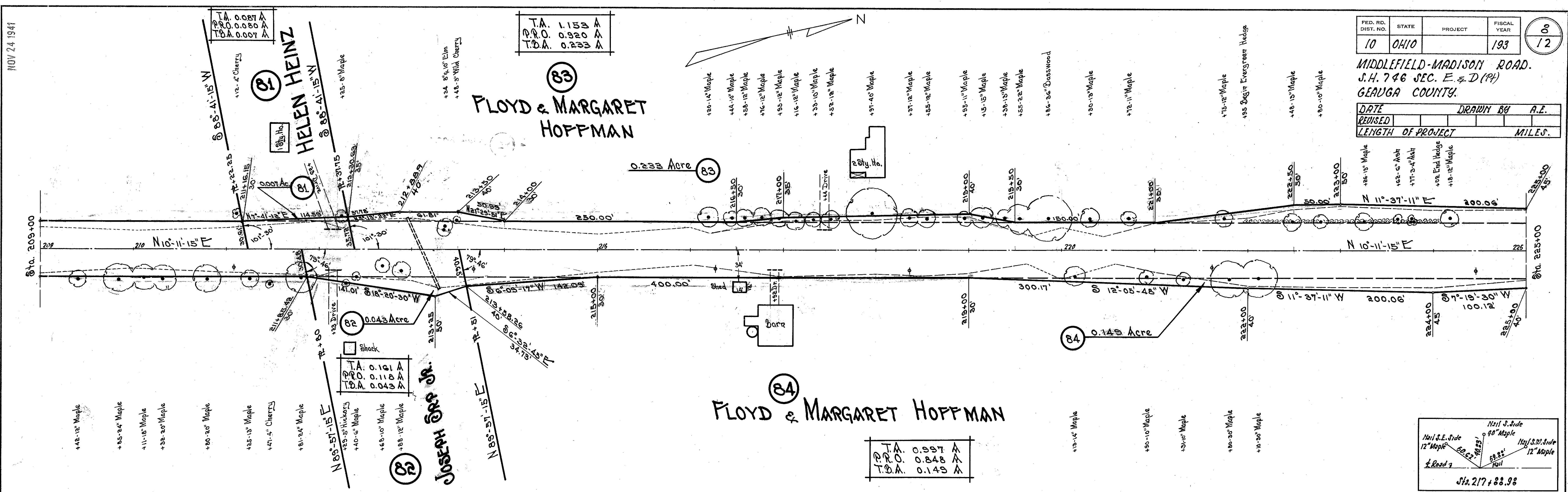


NOV 24 1941

FED. RD. DIST. NO.	STATE	PROJECT	FISCAL YEAR	
10	OHIO		193	

MIDDLEFIELD-MADISON ROAD.  
 S.H. 746 SEC. E. & D (PA)  
 GAUGA COUNTY.

DATE	DRAWN BY				A.E.
REVISED					
LENGTH OF PROJECT					MILES.





NOV 24 1941

89  
J. H. SIDLEY ET. AL.

T.A. 0.815 A  
P.R.O. 0.787 A  
T.D.A. 0.028 A

& Curve Data.  
 $\Delta = 10^{\circ}30'30''$   
 $D = 2'$   
 $R = 2864.79'$   
 $Arc = 263.45'$   
 $Ch = 524.68'$   
 $E = 12.09'$

FED. RD. DIST. NO.	STATE	PROJECT	FISCAL YEAR	
10	OHIO		193	9 12

MIDDLEFIELD-MADISON ROAD.  
S.H. 746 SEC. E & D (M)  
GEAUGA COUNTY.

DATE	DRAWN BY	A.E.
REUSED		
LENGTH OF PROJECT		MILES.

88  
WILLIAM V. JACKSON et.al.

J. H. SIDLEY ET. AL.

T.A. 0.427 A  
P.R.O. 0.405 A  
T.D.A. 0.022 A

Spice S. Side  
17' Maple  
Spice N.E. Side  
17' Maple  
Iron Pin Found  
Sta. 253+99.75

92  
JOHN RITOLA

97  
JACOB RITOLA

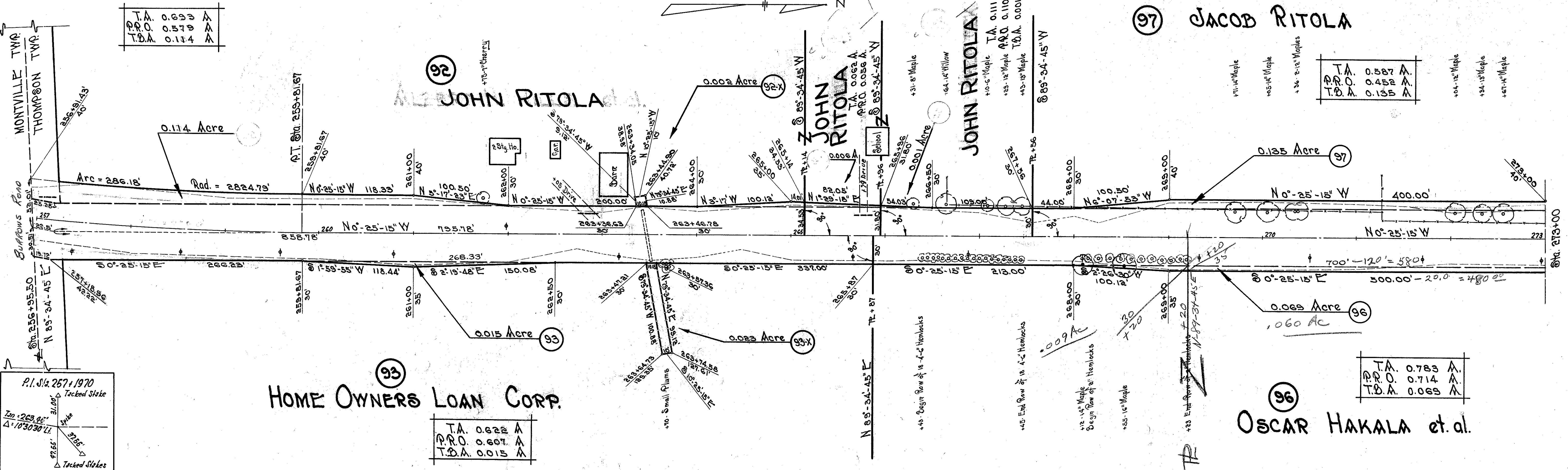
T.A. 0.587 A  
P.R.O. 0.452 A  
T.D.A. 0.135 A

93  
HOME OWNERS LOAN CORP.

96  
OSCAR HAKALA et.al.

T.A. 0.622 A  
P.R.O. 0.607 A  
T.D.A. 0.015 A

T.A. 0.783 A  
P.R.O. 0.714 A  
T.D.A. 0.069 A









NOV 24 1943

JAMES M. WHEELER et.al.

T.A.	1.308	Acres
P.R.O.	0.927	Acre
T.D.A.	0.381	Acre

①①① CHARLES W. &  
FLORENCE E. RAMSEY

T.A.	0.950	A
P.R.O.	0.702	A
T.B.A.	0.248	A

MILO A. GOODRICH

FED. RD. DIST. NO.	STATE	PROJECT	FISCAL YEAR
10	0410		193

MIDDLEFIELD-MADISON ROAD.  
S.H. 746 SEC. E & D (P)  
GEORGIA COUNTY.

DATE                      DRAWN BY A.E.  
 REUSED                       
 LENGTH OF PROJECT                      MILES                     

A diagram showing a road intersection. A horizontal line represents the road, with a label "Rd 7" on the left. A vertical line intersects it. Four tree locations are marked with circles and labeled: "Spike S.E. Side 38" Maple" at the top left, "Spike N.E. Roof 24" Maple" at the top right, "Spike N. Roof 14" Maple" at the bottom right, and "Spike S.W. 25.93" at the bottom left. Distances are marked along the lines: "32.11'" between the top-left and top-right trees, "34.60'" between the top-right and bottom-right trees, "23.46'" between the bottom-right and bottom-left trees, and "32.11'" between the bottom-left and top-left trees. The label "Sta 3/4, 25.93" is at the bottom left.

**E. GOODRICH et al.**  
+23-16 Hickory

ALBERTIANA SAARI

T.A.	1.419 Acres
P.R.O.	1.336 Acres
T.D.A.	0.083 Acre

ROBERT N. SIDLEY et.al.

T.A.	1.462	Acres
P.R.O.	1.357	Acres
T.B.A.	0.105	Acres

MARGARET E. WARNER

T.A.	0.755	Acre
P.R.O.	0.647	Acre
T.P.A.	0.108	Acre



FED. RD. DIST. NO.	STATE	PROJECT	FISCAL YEAR	<div style="border: 1px solid black; border-radius: 50%; width: 60px; height: 60px; display: flex; align-items: center; justify-content: center; margin: 0 auto;"> <div style="text-align: center;">12</div> <div style="text-align: center;">12</div> </div>
10	OHIO		193	

DATE		DRAWN BY		P.E.	
REVISED					
LENGTH OF PROJECT				MILES:	

